

Addressing WRI on an Older System with Modern Demand



Andy Vickerstaff, Senior Wheel-Rail Interface Engineer

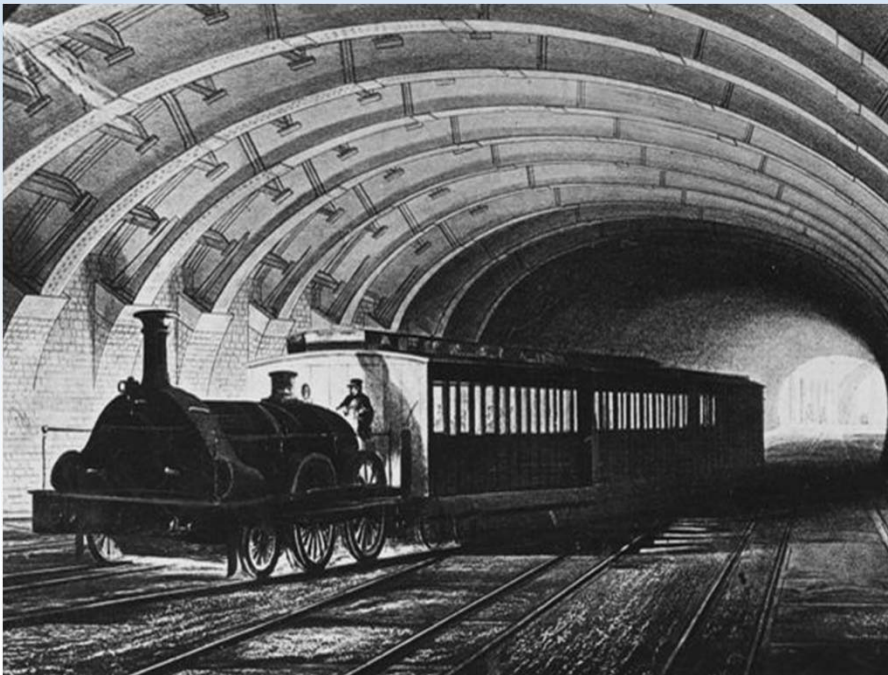


RAIL TRANSIT SEMINAR • MAY 2, 2016

1

WRI 2016

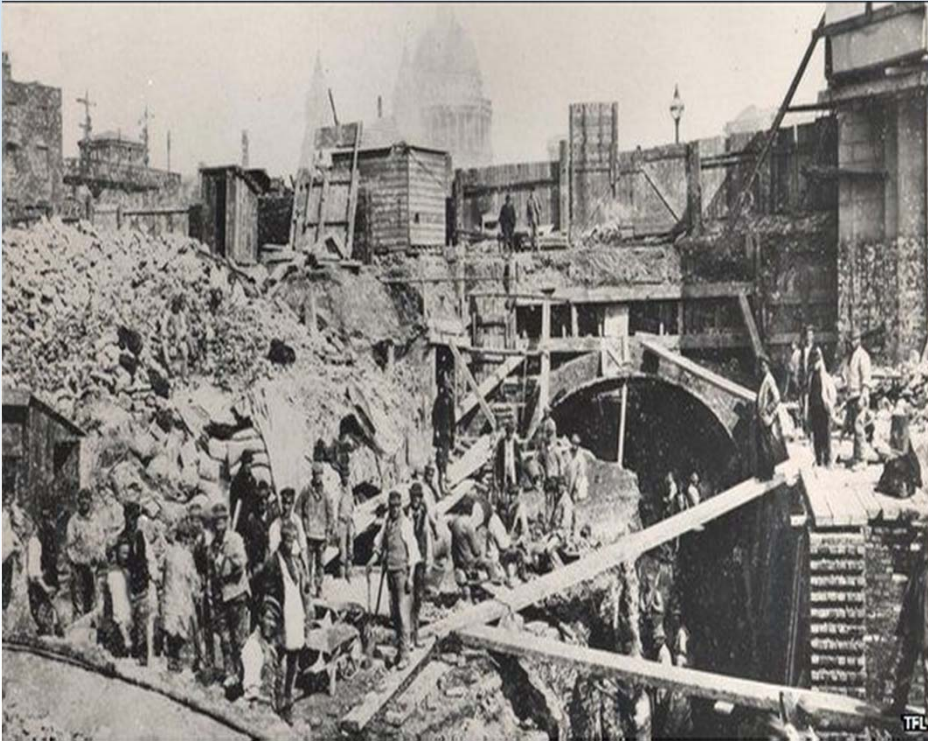
10th January 1863 / 2013



Deep Tube

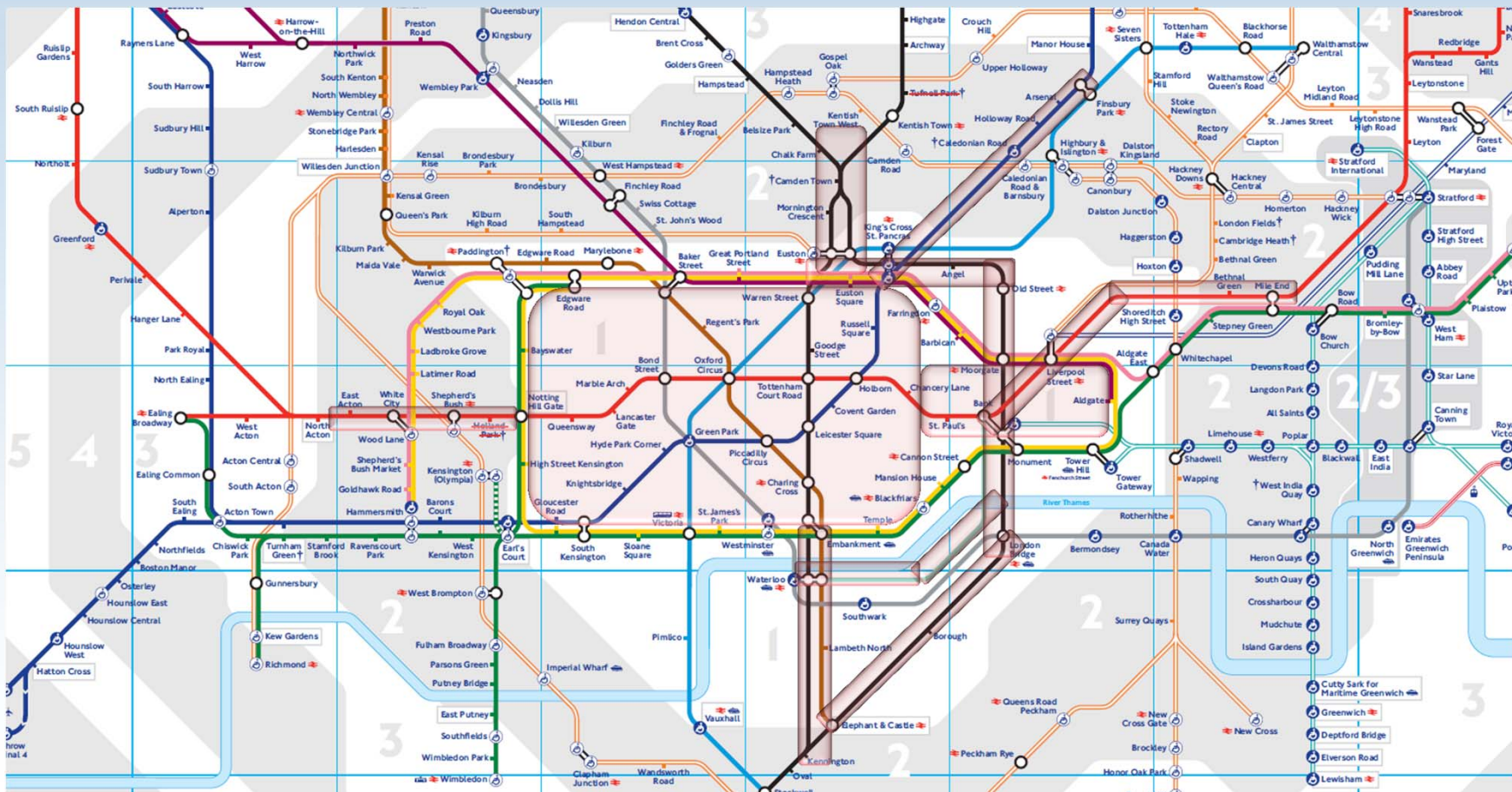


Cut & Cover

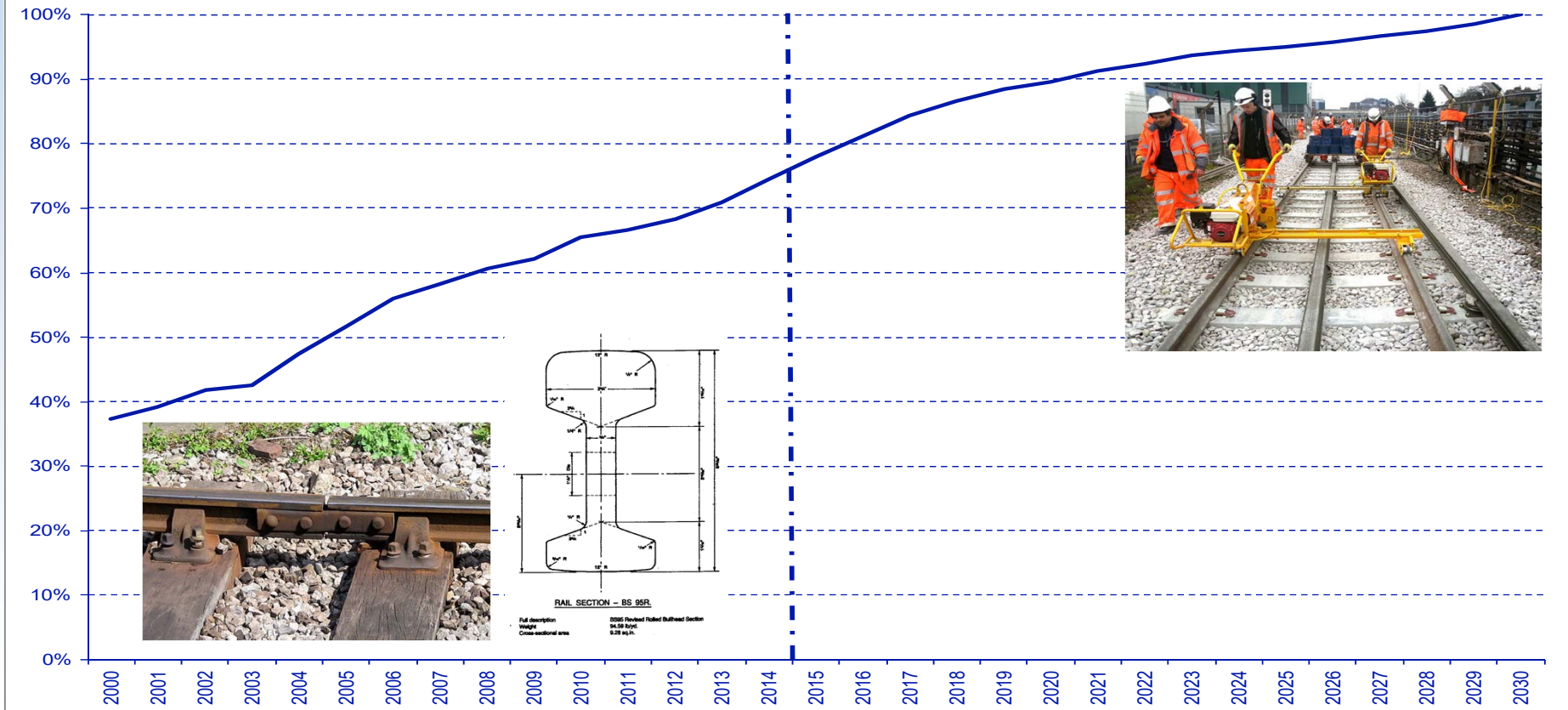


Mind the Gap





Proportion of Network Modernised

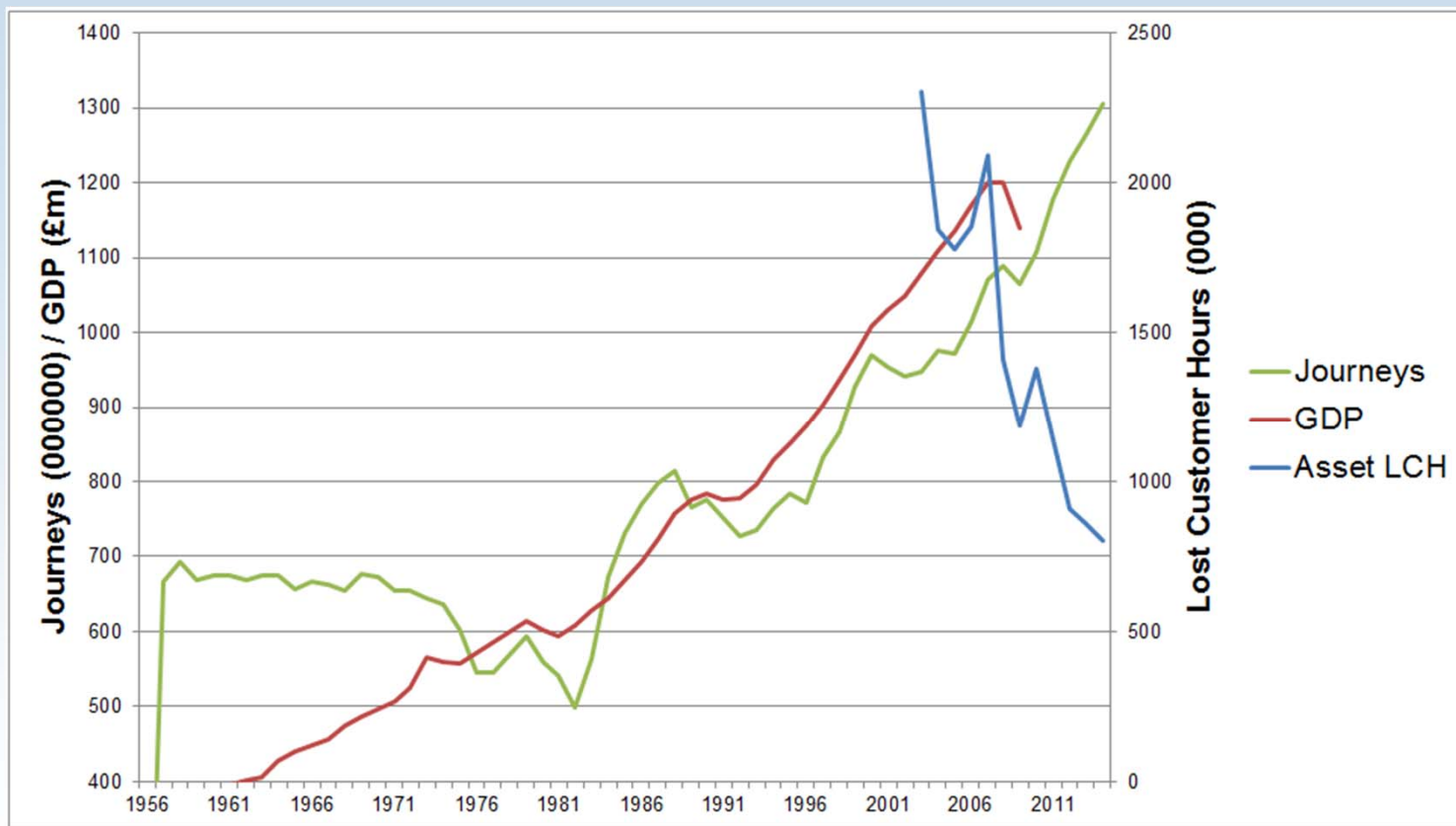


Wheel Lathes



Modern Demand





Night Tube

Operates on Friday and Saturday nights



- Night Tube operates on Friday and Saturday nights
- Central line
 - Jubilee line
 - Northern line
 - Piccadilly line
 - Victoria line



MAYOR OF LONDON

tfl.gov.uk | 020 7 222 1234 | tfl.gov.uk/emailupdates | @TFLTravelAlerts



FREE THE NIGHT



News > Transport

Standing on the left is better! Controversial Tube escalator trial provides massive speed boost

TOM MARSHALL | Saturday 16 January 2016 | 3 comments

